

Drop-In Range

- Sheerline Drop-in Range
- Deluxe Drop-in Range
- Focus Drop-in Range
- Drop-In Accessories
- In-Counter Dispenser
- Roll Under Hot Cupboards

For all our drop in models

Details of cut out dimensions in counter top to take drop in units and ventilation requirements can be found in our Drop in brochure, web site and users manual. Height dimensions are from work surface to top of gantry (where gantry is supplied).

Check dimensions in brochure and operational manual.

Sheerline Drop-in Range Refrigerated Units

Sheerline Chilled Well (these units are supplied without glass)



| MODEL | Weight kg | Dimensions L x D x H mm | 1/1 Gastronorm capacity | Gas weight kg [R404A] | Electrical supply Single phase | Power Rating kw |
|---------|-----------|-------------------------|-------------------------|-----------------------|--------------------------------|-----------------|
| *DRW2SL | 74 | 830 x 660 x 425 | 2 | 1.0 | 10 amp | 2.2 |
| DRW3SL | 85 | 1160 x 660 x 425 | 3 | 1.1 | 10 amp | 2.2 |
| DRW4SL | 95 | 1490 x 660 x 425 | 4 | 1.2 | 10 amp | 2.2 |
| DRW5SL | 105 | 1815 x 660 x 425 | 5 | 1.3 | 15 amp | 2.7 |

* Size 2 models are made for straight through ventilation [front to back] other options are available on request.
Size 3,4,&5 have ventilation on the operators side only

Sheerline Chilled Multi-Tier Display (night blinds must be specified at time of order, these units are supplied with glass)



| MODEL | Weight kg | Dimensions L x D x H mm | Gas weight kg [R404A] | Electrical supply Single phase | Power Rating kw |
|---------|-----------|-------------------------|-----------------------|--------------------------------|-----------------|
| *DRD2SL | 124 | 830 x 660 x 750 | 0.8 | 15 amp | 2.7 |
| DRD3SL | 149 | 1160 x 660 x 750 | 0.89 | 15 amp | 2.7 |
| DRD4SL | 171 | 1490 x 660 x 750 | 1.0 | 15 amp | 2.7 |
| DRD5SL | 196 | 1815 x 660 x 750 | 1.1 | 15 amp | 2.7 |

* Size 2 models are made for straight through ventilation [front to back] other options are available on request.
Size 3, 4, & 5 have ventilation on the operators side only

Optional Extras

NIGHT BLINDS FOR DELUXE MULTI TIER DISPLAY

NB9 Size 2 night blind

NB12 Size 3 night blind

NB15 Size 4 night blind

NB18 Size 5 night blind

WARNING: These units are not designed to operate for more than 12 hours, unless an optional front blind has been fitted.

Sheerline Chilled Deli Display (these units are supplied without glass)



| MODEL | Weight kg | Dimensions L x D x H mm | 1/1 Gastronorm capacity | Gas weight kg [R404A] | Electrical supply Single phase | Power Rating kw |
|--------|-----------|-------------------------|-------------------------|-----------------------|--------------------------------|-----------------|
| DCD3SL | 111 | 1190 x 660 x 555 | 3 | 1.1 | 10 amp | 2.2 |
| DCD4SL | 121 | 1490 x 660 x 555 | 4 | 1.2 | 10 amp | 2.2 |

Sheerline Drop-in Range Heated Units with fitted gantry

Sheerline Bain Marie with Enviro Well (Containers not included, these units are supplied without glass)



| MODEL | Weight kg | Dimensions L x D x H mm | 1/1 Gastronorm capacity | No. of 200 Watt Lamps Fitted | Electrical supply Single phase | Power Rating kw |
|--------|-----------|-------------------------|-------------------------|------------------------------|--------------------------------|-----------------|
| DBM2SL | 30 | 830 x 660 x 425 | 2 | 1 | 10 amp | 1.2 |
| DBM3SL | 38 | 1160 x 660 x 425 | 3 | 2 | 10 amp | 1.9 |
| DBM4SL | 46 | 1490 x 660 x 425 | 4 | 3 | 10 amp | 2.1 |
| DBM5SL | 54 | 1815 x 660 x 425 | 5 | 4 | 15 amp | 2.8 |
| DBM6SL | 63 | 2145 x 660 x 425 | 6 | 5 | 15 amp | 2.9 |

Bain Marie are fan assisted

Note: Quartz lamps can only supplement the process of keeping hot food hot.

Sheerline Hot Top Display (these units are supplied without glass)



| MODEL | Weight kg | Dimensions L x D x H mm | Number of 200w thermo panels | No. of 200 Watt Lamps Fitted | Electrical supply Single phase | Power Rating kw |
|--------|-----------|-------------------------|------------------------------|------------------------------|--------------------------------|-----------------|
| DHT2SL | 25 | 830 x 660 x 425 | 2 | 1 | 10 amp | 0.6 |
| DHT3SL | 33 | 1160 x 660 x 425 | 3 | 2 | 10 amp | 1.0 |
| DHT4SL | 41 | 1490 x 660 x 425 | 4 | 3 | 10 amp | 1.4 |
| DHT5SL | 50 | 1815 x 660 x 425 | 5 | 4 | 10 amp | 1.8 |
| DHT6SL | 59 | 2145 x 660 x 425 | 6 | 5 | 10 amp | 2.2 |

Sheerline Deli Hot Top Display (these units are supplied without glass)



| MODEL | Weight kg | Dimensions L x D x H mm | Number of 200w thermo panels | No. of 200 Watt Lamps Fitted | Electrical supply Single phase | Power Rating kw |
|---------------|-----------|----------------------------|---------------------------------------|------------------------------------|--------------------------------------|--------------------|
| DHD3SL | 60 | 1190 x 660 x 555 | 3 | 2 | 10 amp | 1.0 |
| DHD4SL | 70 | 1490 x 660 x 555 | 4 | 3 | 10 amp | 1.4 |

Note: Quartz lamps can only supplement the process of keeping hot food hot.

Deluxe Chilled Multi-Tier Display (these units are supplied with glass. Night blinds must be specified at time of order)



| MODEL | Weight kg | Dimensions L x D x H mm | Gas weight kg (R404A) | Electrical supply Single phase | Power Rating kw |
|--------------|-----------|----------------------------|--------------------------|--------------------------------------|--------------------|
| *DRD2 | 124 | 830 x 660 x 750 | 0.8 | 15 amp | 2.7 |
| DRD3 | 149 | 1160 x 660 x 750 | 0.9 | 15 amp | 2.7 |
| DRD4 | 171 | 1490 x 660 x 750 | 1.0 | 15 amp | 2.7 |
| DRD5 | 196 | 1815 x 660 x 750 | 1.1 | 15 amp | 2.7 |

* Size 2 models are made for straight through ventilation [front to back] other options are available on request.
Size 3,4,&5 have ventilation on the operators side only

Optional Extras

NIGHT BLINDS FOR DELUXE MULTI TIER DISPLAY

NB9 Size 2 night blind

NB12 Size 3 night blind

NB15 Size 4 night blind

NB18 Size 5 night blind

WARNING: These units are not designed to operate in full mode for more than 12 hours, unless an optional front blind has been fitted.

Deluxe Chilled Multi-Tier Display with lockable roller shutter (these units are supplied with glass)



| MODEL | Weight kg | Dimensions L x D x H mm | Gas weight kg (R404A) | Electrical supply Single phase | Power Rating kw |
|-----------------|-----------|----------------------------|--------------------------|--------------------------------------|--------------------|
| *DRD2LSA | 124 | 830 x 660 x 900 | 0.8 | 10 amp | 1.0 |
| DRD3LSA | 149 | 1160 x 660 x 900 | 0.9 | 10 amp | 1.0 |
| DRD4LSA | 171 | 1490 x 660 x 900 | 1.0 | 10 amp | 1.0 |
| DRD5LSA | 196 | 1815 x 660 x 900 | 1.1 | 10 amp | 2.0 |

* Size 2 models are made for straight through ventilation [front to back] other options are available on request.
Size 3,4,&5 have ventilation on the operators side only

Deluxe Chilled Deli Display (these units are supplied with glass)



| MODEL | Weight kg | Dimensions L x D x H mm | 1/1 Gastronorm capacity | Gas weight kg (R404A) | Electrical supply Single phase | Power Rating kw |
|-------------|-----------|----------------------------|-------------------------------|--------------------------|--------------------------------------|--------------------|
| DCD3 | 111 | 1160 x 660 x 555 | 3 | 1.1 | 10 amp | 2.2 |
| DCD4 | 121 | 1490 x 660 x 555 | 4 | 1.2 | 10 amp | 2.2 |

Focus Drop-in Range

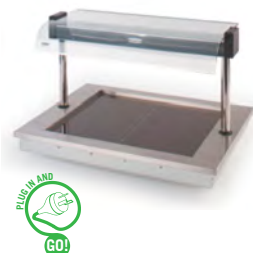
Focus Chilled Well



| MODEL | Weight kg | Dimensions L x D x H mm | Electrical supply | Power Rating kW | |
|--------|-----------|----------------------------|----------------------|--------------------|--|
| *D2RFG | 44 | 890 x 660 x 420 | 10 amp | 1.0 | |
| *D3RFG | 66 | 1190 x 660 x 420 | 10 amp | 1.0 | |
| *D4RFG | 82 | 1490 x 660 x 420 | 10 amp | 1.0 | |
| *D5RFG | 98 | 1790 x 660 x 420 | 10 amp | 1.0 | |

* All models are made for straight through ventilation [front to back] other options are available on request.

Focus Hot Top



| MODEL | Weight kg | Dimensions L x D x H mm | Electrical supply | Power Rating kW | No. of 200W thermo Panels | |
|-------|-----------|----------------------------|----------------------|--------------------|------------------------------|--|
| D2HTG | 28 | 890 x 660 x 420 | 10 amp | 0.7 | 2 | |
| D3HTG | 37 | 1190 x 660 x 420 | 10 amp | 1.2 | 3 | |
| D4HTG | 46 | 1490 x 660 x 420 | 10 amp | 1.4 | 4 | |
| D5HTG | 55 | 1790 x 660 x 420 | 10 amp | 1.9 | 5 | |
| D6HTG | 65 | 2140 x 660 x 420 | 10 amp | 2.1 | 6 | |

Note: Quartz lamps can only supplement the process of keeping hot food hot.

Focus Hot Tops are designed to keep cooked food at the correct serving temperature and are suitable for most hot food products. 1/1GN size black toughened glass panels guarantee evenly-distributed heat with no hot spots, distortion or discolouring. The energy regulated-controlled surface maintains food temperatures between 75 and 110°C. A quartz heated/illuminated gantry is mounted over the Hot Top, complete with a curved clear toughened glass sneeze screen.

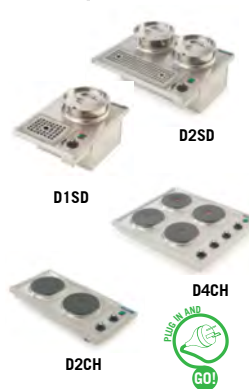
Focus Bain Marie (Complete with curved glass sneeze screen. Containers not included)



| MODEL | Weight kg | Dimensions L x D x H mm | Electrical supply | Power Rating kw | 1/1 Gastronorm capacity |
|-------|-----------|-------------------------|-------------------|-----------------|-------------------------|
| D2BMG | 35 | 890 x 660 x 420 | 10 amp | 1.3 | 2 |
| D3BMG | 46 | 1190 x 660 x 420 | 15 amp | 2.6 | 3 |
| D4BMG | 57 | 1490 x 660 x 420 | 15 amp | 2.6 | 4 |
| D5BMG | 69 | 1790 x 660 x 420 | 15 amp | 2.8 | 5 |
| D6BMG | 81 | 2140 x 660 x 420 | 15 amp | 2.8 | 6 |



Drop-In Accessories



| MODEL | Weight kg | Dimensions L x D x H mm | Electrical supply | Power Rating kw |
|-------|-----------|-------------------------|-------------------|-----------------|
| D2DS | 10 | 610 x 500 x 650 | - | - |
| D2CC | 15 | 800 x 550 x 500 | - | - |
| D1SD | 5 | 300 x 455 x 95 | 10 amp | 0.35 |
| D2SD | 8 | 550 x 455 x 95 | 10 amp | 0.7 |
| D2CH | 7 | 650 x 300 x 50 | 15 amp | 2.4 |
| D4CH | 12 | 650 x 550 x 50 | 2x15 amp | 6.0 |



In-Counter Dispensers



| MODEL | Weight kg | Dimensions L x D x H mm | Electrical supply | Power rating kw | Plate Dimensions Adjustable mm | Approximate No. of Plates* |
|-------|-----------|-------------------------|-------------------|-----------------|--------------------------------|----------------------------|
| DUP1 | 15 | 400 x 400 x 645 | - | - | 203 - 305 | 65 |
| DUP2 | 27 | 400 x 740 x 645 | - | - | 203 - 305 | 2 x 65 |
| DHP1 | 16 | 400 x 400 x 645 | 10 amp | 0.6 | 203 - 305 | 65 |
| DHP2 | 28 | 400 x 740 x 645 | 10 amp | 1.2 | 203 - 305 | 2 x 65 |



* Plate capacity can vary depending upon plate thickness, profile and manufacturer

In-Counter Plate and Crockery Dispensers



| MODEL | Weight kg | Dimensions L x D x H mm | Electrical supply | Power rating kw | Plate Dimensions mm | Approximate No. of Plates* |
|-------|-----------|-------------------------|-------------------|-----------------|---------------------|----------------------------|
| DHD1 | 13 | 420 x 345 x 650 | 10 amp | 0.6 | 300 Square | 65 |
| DAD1 | 11 | 420 x 345 x 650 | 10 amp | - | 300 Square | 65 |



* Plate capacity can vary depending upon plate thickness, profile and manufacturer.
Any size or shape of plate with in 300mm (12in) Square

Note: The heated dispensers are complete with a mains lead and 10 amp plug as standard or can be supplied with a wiring loom for counter control panel connections, this must be specified at time of order.

Roll Under Hot Cupboards (Fan heating system)



| MODEL | Weight kg | Dimensions L x D x H mm | Electrical supply | Power Rating kw |
|---------|-----------|-------------------------|-------------------|-----------------|
| HC85RU | 50 | 850 x 660 x 605 | 10 amp | 1.0 |
| HC115RU | 70 | 1150 x 660 x 605 | 10 amp | 1.0 |
| HC145RU | 85 | 1450 x 660 x 605 | 10 amp | 1.0 |
| HC175RU | 95 | 1750 x 660 x 605 | 10 amp | 2.0 |

